

# CERTIFICATE OF LOCATION OF GOVERNMENT CORNER

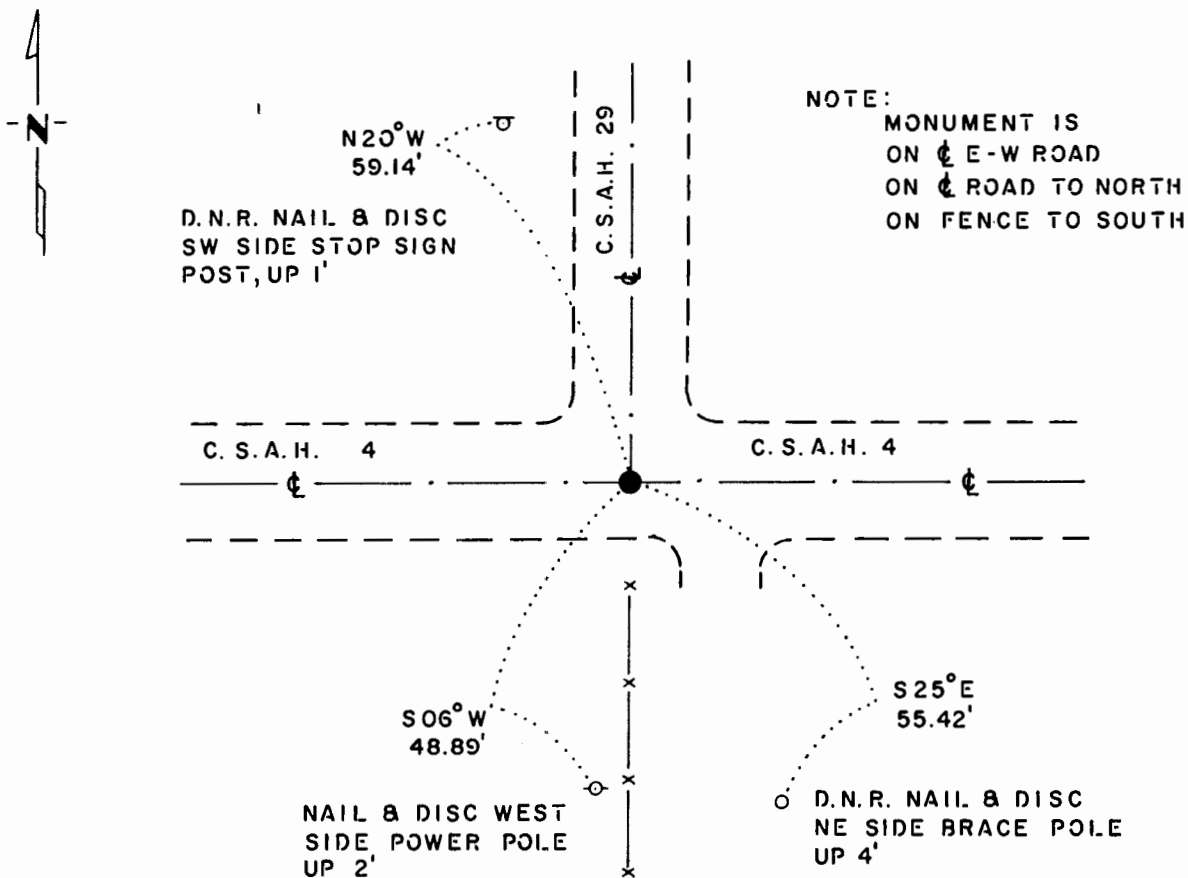
NORTH QUARTER Corner of Section 11, Township 105 N., Range 42 W., 5<sup>th</sup> P.M.

STATE OF MINNESOTA, County of MURRAY

At the corner location shown on the sketch:

- On 3-26-84 found a 3/4" IRON ROD, FLUSH  
DATE
- left monument as found,  lowered monument,  removed monument (explain)
- On \_\_\_\_\_ placed a \_\_\_\_\_  
DATE

### SKETCH OF REFERENCE TIES



### BEARINGS OBSERVED WITH COMPASS

Statement of evidence relative to this corner location is on back of page.

J. B. M. 5-11-84  
6-1168

I hereby certify that this document and the data contained herein was prepared by me or under my direct supervision.

Bert R. Evland 10-5-84  
SIGNATURE DATE

Registration No. 10516

- Land Surveyor,  Professional Engineer
- County Surveyor,  County Engineer

OFFICE OF THE COUNTY RECORDER  
County of Murray

I hereby certify that this document was filed in the Co. Recorders office at 10 A.M. on the 11th day of October A.D., 19 84

County Recorder Kevin J. Ohme

By \_\_\_\_\_, Deputy

DOCUMENT NO. 170427

North Quarter Corner Section 11, Township 105 North, Range 42 West

This corner was originally established by the U. S. General Land Office survey in 1861. The government notes show corner marked with a wood post set in mound of earth with pits and trench dug around the mound.

On March 21, 1984, the DNR Bureau of Engineering contacted the Murray County Offices of the Recorder and Highway Engineer for corner information.

The following information was obtained from the County Recorder's Office:  
Surveyor's Record Book A, Page 72, contains a survey done by J. W. Woolstencroft, dated May 11, 1898. Corner is shown as a stone with mound and pits, 39.93 chains (2635.38 feet) from both adjoining section corners.

The following information was obtained from the County Highway Engineer's Office:

County Engineer's copy of Surveyor's Record Book A, Page 72 shows the following:

- May 1948 - concrete stone for corner with the following ties:
  - R. P. tack in first fence post west of brace post southwest of corner, 57.0 feet
  - R.P. tack in telephone pole, northwest 84.0 feet
- July 6, 1973, dug for this corner with a backhoe and found a concrete monument and placed a steel pin over, in 3 inch bituminous overlay. Took the following ties:
  - Nail and cap, brace power pole, southeast, 55.12 feet
  - Nail and cap, power pole, south, 48.87 feet
  - Tack in fence post, southwest 57.2 feet
  - Tack in corner fence post south 50.41 feet

In March 1984, the DNR Bureau of Engineering traversed to the area of the corner and found a 3/4 inch iron rod. Searched for and found county ties as shown on this certificate. The iron rod was found to be:

- 2633.22 feet from the northeast corner Section 11
- 2636.38 feet from the northwest corner Section 11

The DNR Bureau of Engineering accepts the iron rod as the location of the government corner.

Traverse information is available from the DNR Bureau of Engineering.

State of Minnesota, }  
County of Murray, } ss. **170427**

I hereby certify that the within instrument was filed in this office for record on the

11th day of October A.D. 19 84,

at 10:00 o'clock A.M., and was duly recorded as Microfilm Document No. 170427

  
County Recorder